

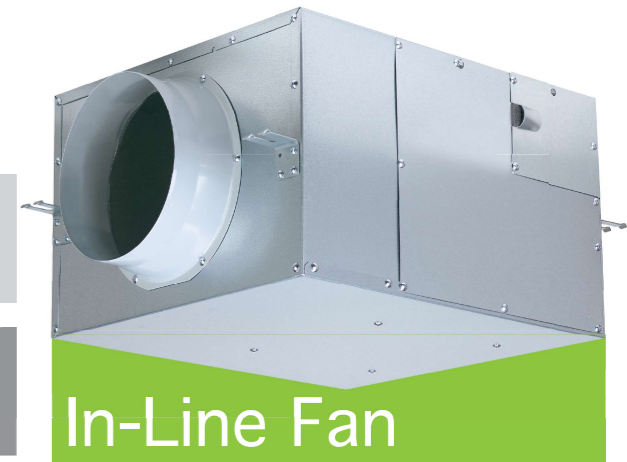
Model Comparison

Model No.	Phase	Rating Voltage [V/Hz]	Consumption [W]	R.P.M. [min ⁻¹]	Air Volume		Noise [dB(A)]	Weight [kg]	Duct Size [mm]	Impeller Diameter [mm]					
					[CMH]	[CFM]									
FV-12NS3	1	220	50	Hi	18	1,265	180	106	21	5.5	ø100	128			
				Lo	17	1,020	145	85	17						
			60	Hi	23	1,370	190	112	22						
				Lo	19	1,000	145	85	18						
FV-15NS3			50	Hi	33	1,270	340	200	25				6.5	ø150	128
				Lo	29.5	1,100	275	162	22						
			60	Hi	42	1,385	370	218	27						
				Lo	33	1,040	260	153	22						
FV-18NS3	50	Hi	60	1,250	500	294	29	8.5	ø150	158					
		Lo	55	1,100	405	238	27								
	60	Hi	73	1,260	490	288	30								
		Lo	62.5	990	385	227	26								
FV-18NF3	50	Hi	91	1,190	770	453	31				10	ø200	158		
		Lo	80	1,000	620	365	29								
	60	Hi	119	1,245	760	447	32								
		Lo	87	990	580	341	28								
FV-20NS3	50	Hi	120	1,195	920	541	32	14	ø200	178					
		Lo	113	1,000	720	424	29								
	60	Hi	159	1,165	860	506	32								
		Lo	128	875	620	365	26								
FV-23NL3	50	Hi	230	1,245	1,200	706	40				18	ø200	220		
		Lo	170	985	900	530	34								
	60	Hi	310	1,210	1,100	647	40								
		Lo	190	890	800	471	32								
FV-25NS3	50	Hi	345	1,125	1,700	1,000	41	24	ø250	220					
		Lo	265	950	1,380	812	38								
	60	Hi	425	1,100	1,650	971	41								
		Lo	300	890	1,200	706	39								
FV-25NF3	50	Hi	390	1,225	1,900	1,118	43				24	ø250	220		
		Lo	325	1,070	1,600	942	40								
	60	Hi	520	1,245	1,810	1,065	42								
		Lo	380	1,000	1,400	824	41								
FV-25SW3	3	380	50	940	1,375	4,000	2,354	43	60	250 x 500				250	
60			1,450	1,530	4,500	2,648	45								
FV-25SM3			50	1,180	1,345	5,200	3,060	45							
			60	1,750	1,470	5,500	3,233	46							
FV-28NX3			50	600	1,296	2,600	1,530	44			28	ø250	280		
			60	840	1,380	2,650	1,560	45							

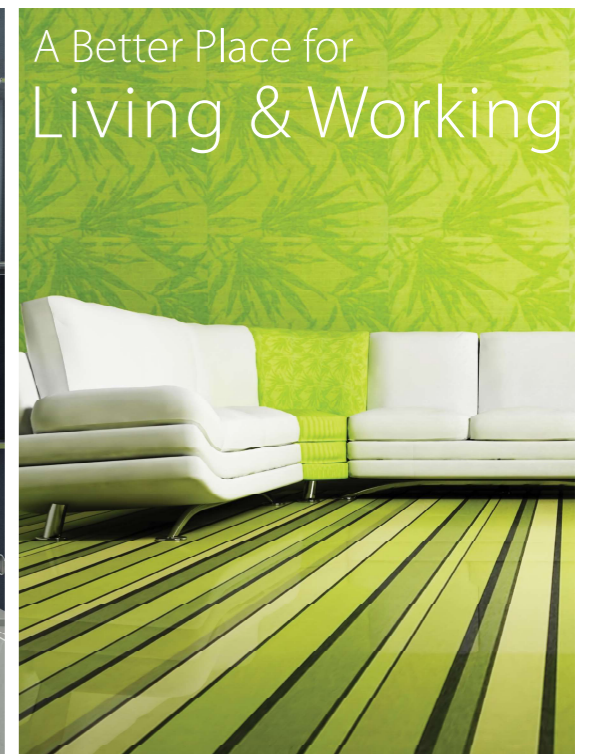
Note: The value in specification tables are representative characteristic value at 220V 50 / 60Hz, and 380V 50 / 60Hz, respectively
R.P.M. data is for reference only, values may vary subject to different conditions.

Panasonic

Low Noise Type CABINET FAN



In-Line Fan



A Better Place for
Living & Working

• Actual colors may vary slightly from those shown.
• Specifications are subjected to change without prior notice.

Panasonic®

Panasonic Ecology Systems Co., Ltd.

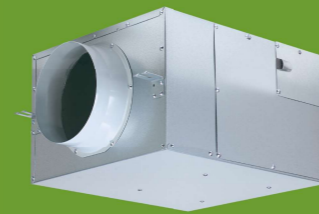
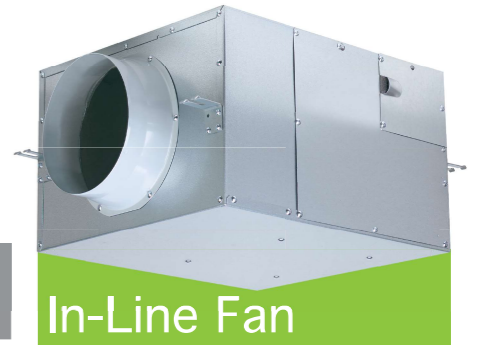
CATALOG NO: P-AME001B2

PRINTED IN HONG KONG (04.18)

A Better Place for Living & Working

Low Noise Type

CABINET FAN



Single Phase
Series



Three Phase
Series

Index

03

Introduction

09

- FV-12NS3
- FV-15NS3

11

- FV-20NS3
- FV-23NL3

13

- FV-25SW3
- FV-25SM3

14

- FV-28NX3

04

Recommended
Application

05

Features &
Advantages

10

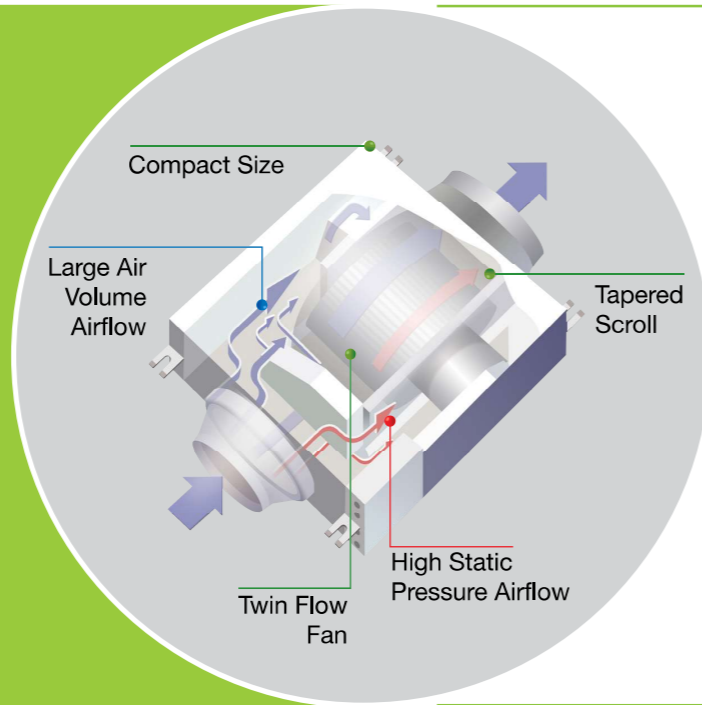
- FV-18NS3
- FV-18NF3

12

- FV-25NS3
- FV-25NF3



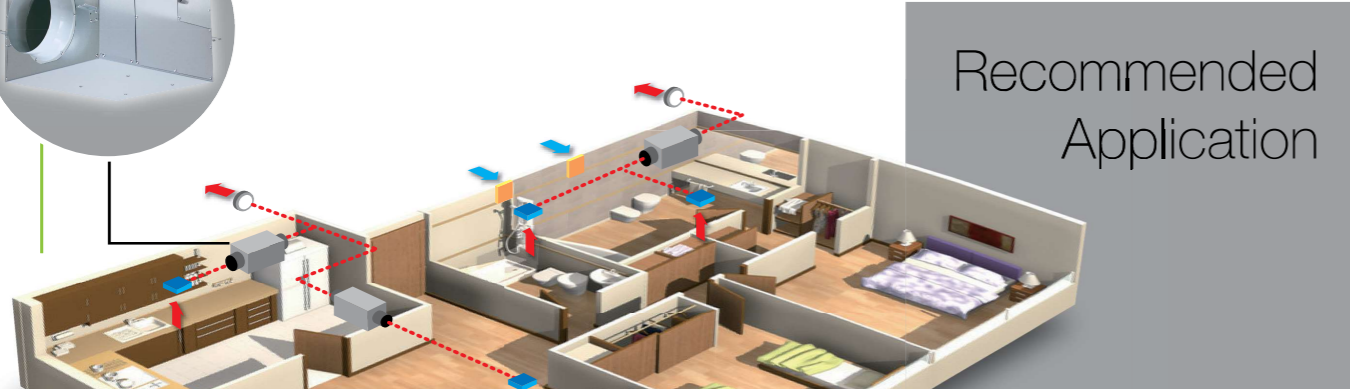
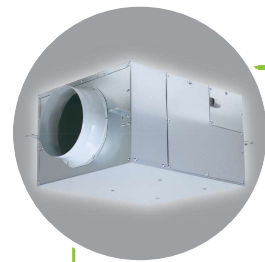
Introduction



These fans are ducted ventilating fans with both intake and outlet opening fixing at interior and exterior of the house respectively. They can be used as single port or multi port to exhaust air from several areas with one unit. Since only a small ventilation opening is required, the appearance of the interior is not spoiled.

All models are manufactured from galvanized steel enhancing high durability. The unique suction fan design and acoustic noise absorbing material realize low noise operation. The high performance induction motor offers low energy consumption, long life and high reliability.

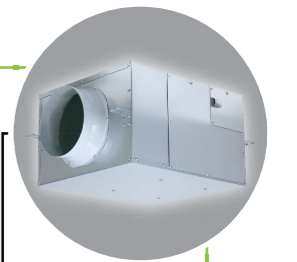
The slim, compact and light-weight structure allows easy installation at narrow ceiling space. Those units can be installed upside down, that location of inspection opening can be selected to ensure easy access for maintenacne. Special designed U-grooved mounting brackets prevent mounting bolts from being loosen, that reinforce installation safety.



Recommended Application



Residences



Low noise type Cabinet Fan (In-Line Fan) can be used as serving for ventilation in various environments, such as residences, office and hotels.



Offices

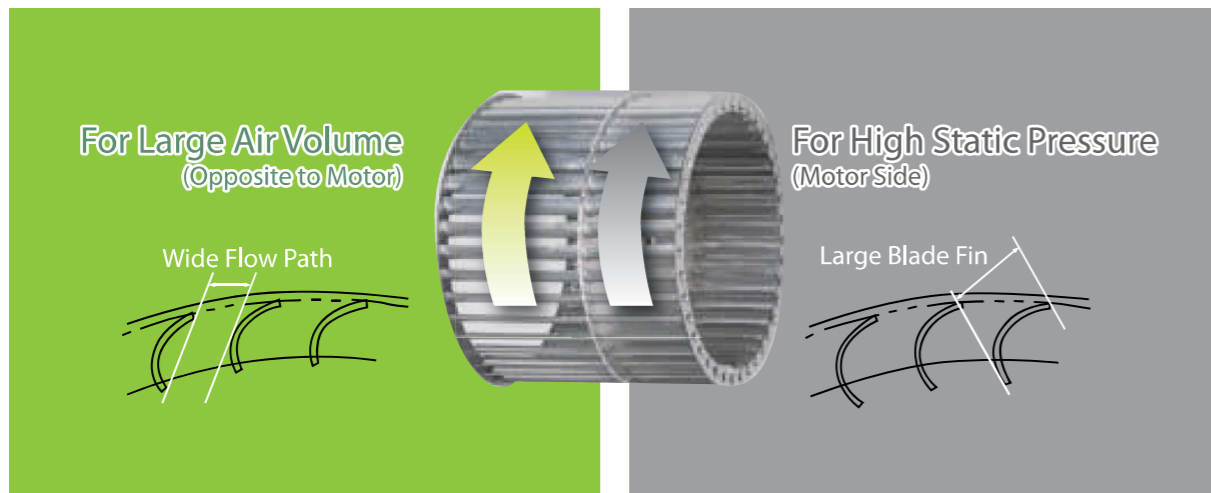
Features



Advantages

Twin Flow Fan

The newly developed twin flow fan achieves a better airflow inside the fan casing. It is divided into two portions which can generate large air volume and high static pressure respectively.



Tapered Scroll

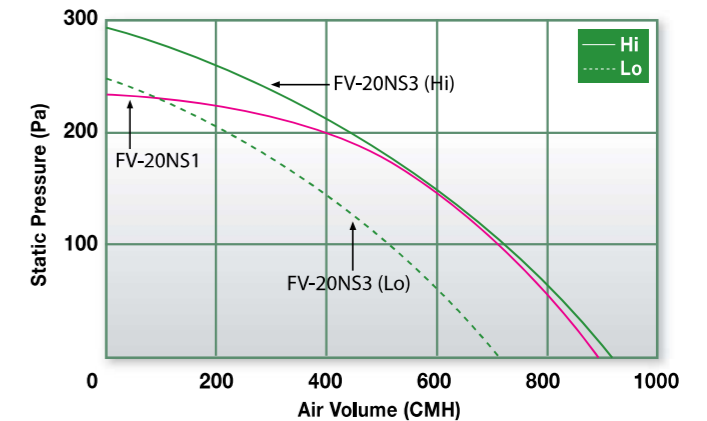
Wind velocity varies according to the shape of fan casing. The tapered scroll at the fan casing can minimize the turbulence induced by uneven wind velocity inside the casing.



Internal Wind Velocity Distribution – Airflow Analysis

High Static Pressure

The distinctive design of twin flow fan and fan casing enables an operation with high static pressure. Basically, approximately 10% in average increases when compared with previous models, it surely enhances the flexibility for your planning of ventilation system.

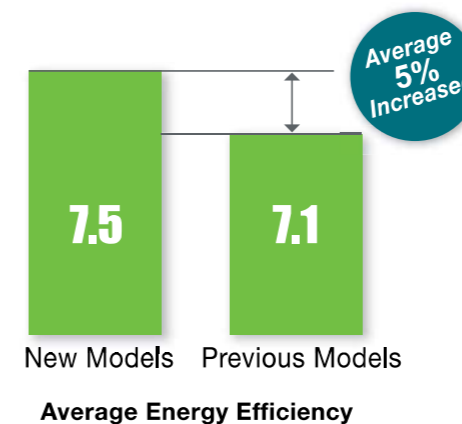


Noise Reduction

With the twin flow fan and fan casing structure, the new models minimize the transmission of noise and reduce it down to 7% in average while the air volume is maintained. This technology creates a more tranquil and pleasant environment to you.

Energy Saving

Along with the new structure design, it improves the fan performance by increasing energy efficiency up to 5% in average. In addition, energy saving is assured by reducing power consumption significantly.



$$\text{Energy Efficiency} = \text{Air Volume} / \text{Power Consumption}$$

Example: Model No. FV-20NS3

Air Volume = 920 CMH (Hi)
 Power Consumption = 120 W
 Energy Efficiency = 920 CMH / 120W
 = 7.7

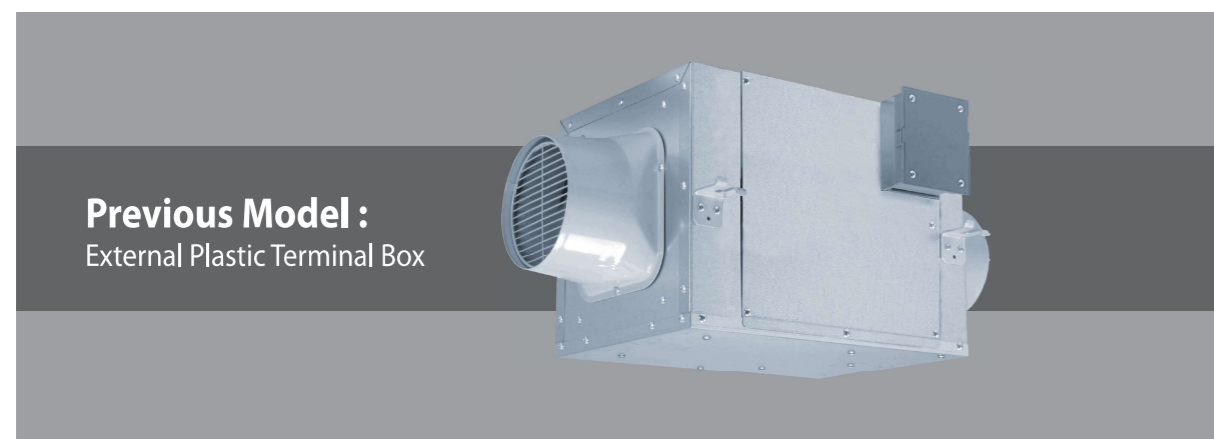
Features



Advantages

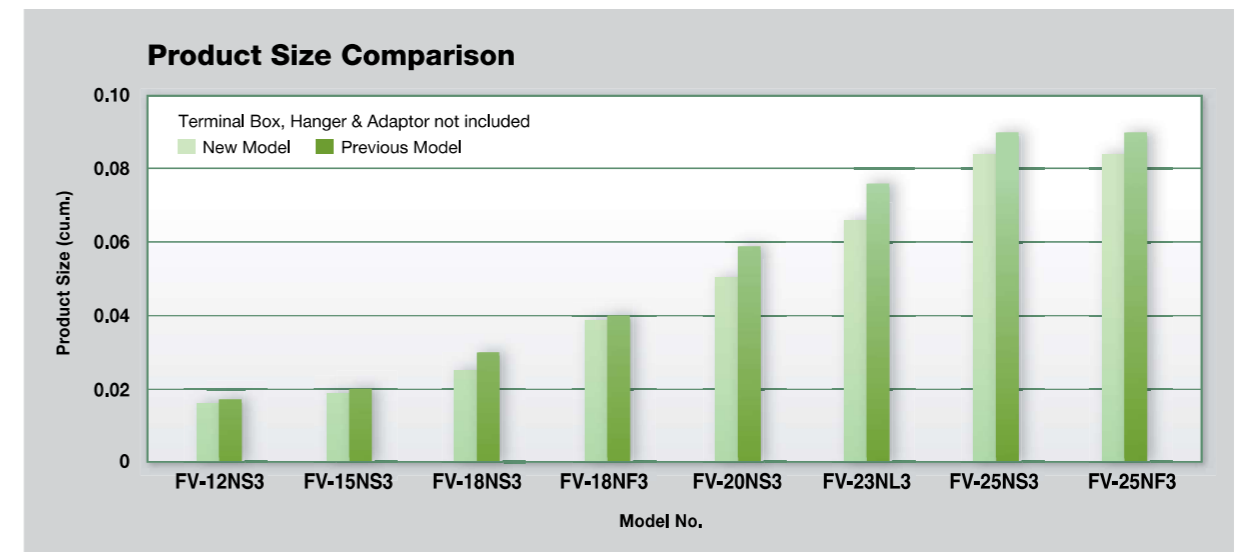
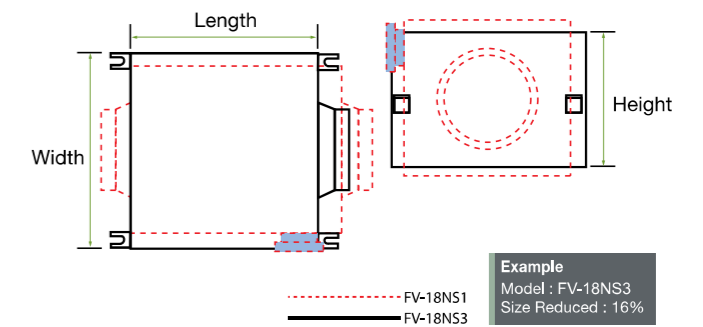
Embedded Terminal Box

Terminal boxes of new models are embedded into the produce frame. Wiring to power supply are covered with metal enclosure that enhances the durability and safety concern.



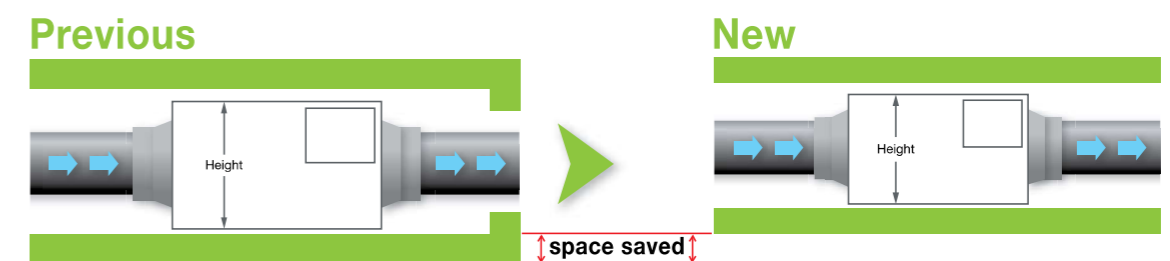
Compact Size

Due to the newly designed structure, the product size of new models generally reduce up to 9% while the performance can be maintained. In other words, it provides a higher flexibility for installation.

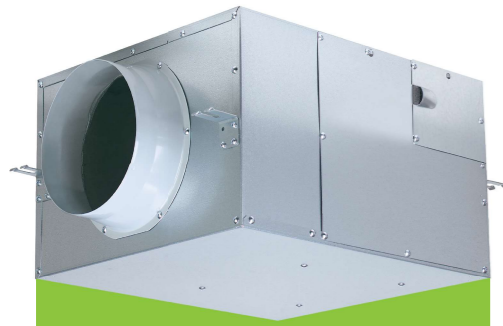


Easy Installation

A slim, compact and light body allows an easy installation at narrow ceiling space, when compared with the previous models.



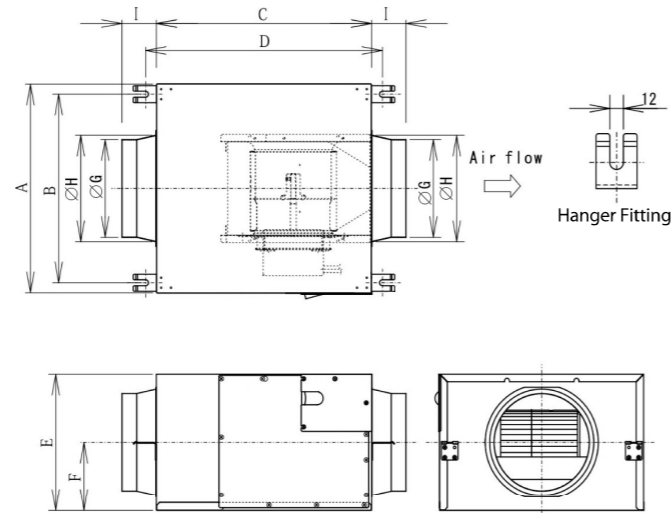
FV-12NS3 / FV-15NS3



- Long life condenser motor with thermal cut-off
- Twin flow fan (sirocco fan)
- Fan casing with tapered scroll
- Embedded terminal box
- Noise absorption material adopted
- Compact size

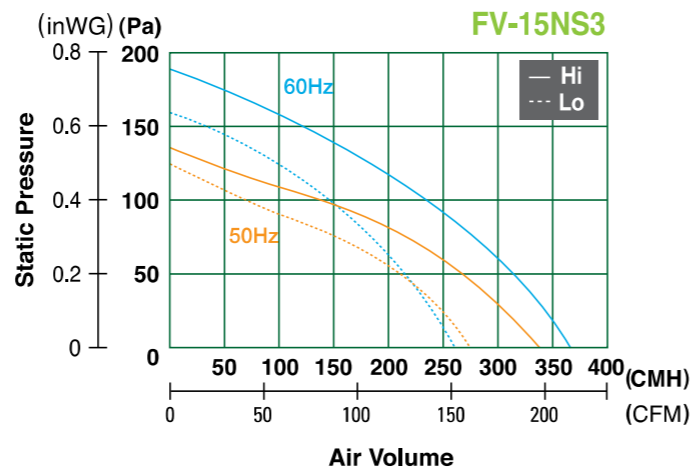
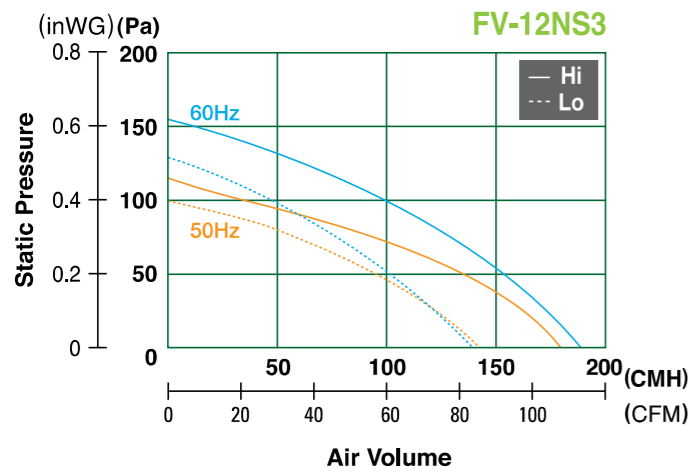
Dimension

Unit : mm



Model	A	B	C	D	E	F	G	H	I
FV-12NS3	290	250	291	335	184	92	97	112	51
FV-15NS3	290	250	302	346	206	103	145	163	60

Performance Data (220V 50/60Hz)

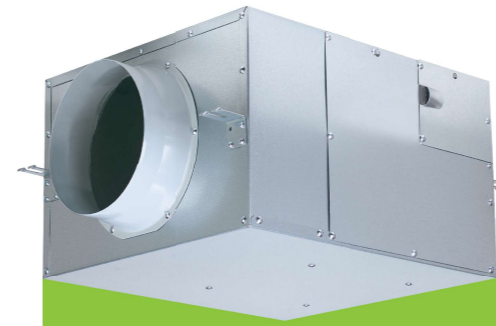


Specification

Model No.	Phase	Rating Voltage [V/Hz]	Consumption [W]	R.P.M. [min ⁻¹]	Air Volume		Noise [dB(A)]	Weight [kg]	Duct Size [mm]	Impeller Diameter [mm]		
					[CMH]	[CFM]						
FV-12NS3	1	220	18	1,265	50	Hi	180	106	21	5.5	ø100	128
					Lo	145	85	17				
			60	Hi	190	112	22					
				Lo	145	85	18					
FV-15NS3	1	220	33	1,270	50	Hi	340	200	25	6.5	ø150	128
					Lo	275	162	22				
			60	Hi	42	1,385	370	218	27			
				Lo	33	1,040	260	153	22			

Note: The value in Specification tables are representative characteristic value at 220V, 50/60Hz.

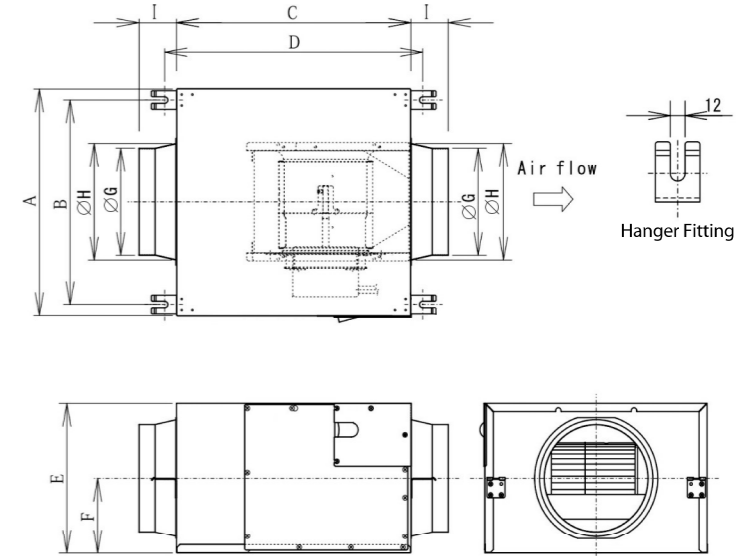
FV-18NS3 / FV-18NF3



- Long life condenser motor with thermal cut-off
- Twin flow fan (sirocco fan)
- Fan casing with tapered scroll
- Embedded terminal box
- Noise absorption material adopted
- Compact size

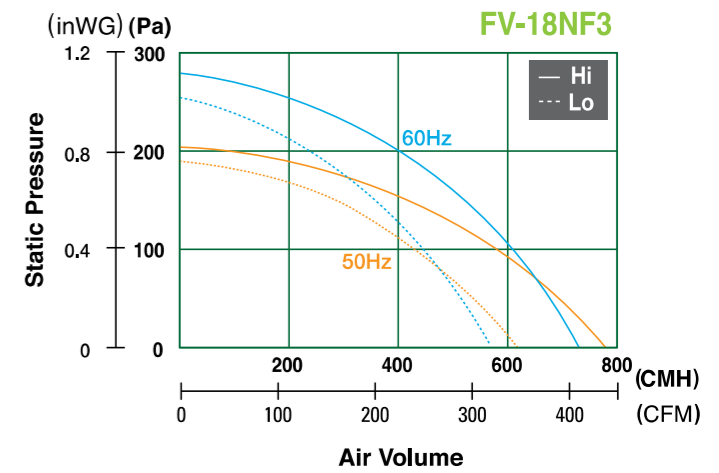
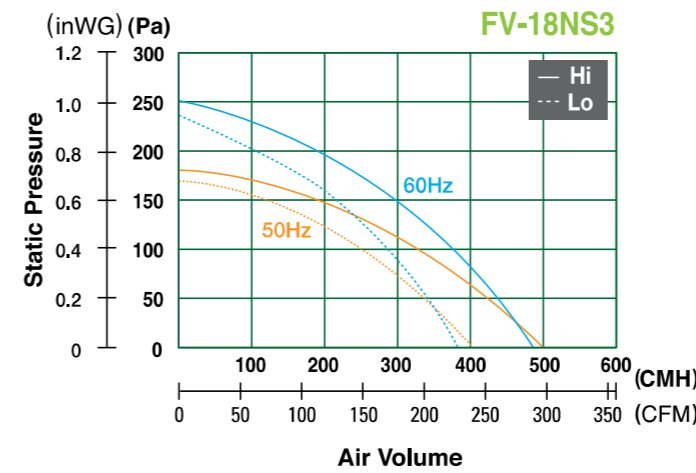
Dimension

Unit : mm



Model	A	B	C	D	E	F	G	H	I
FV-18NS3	316	276	338	382	232	116	145	163	60
FV-18NF3	376	336	397	441	254	127	195	211	70

Performance Data (220V 50/60Hz)

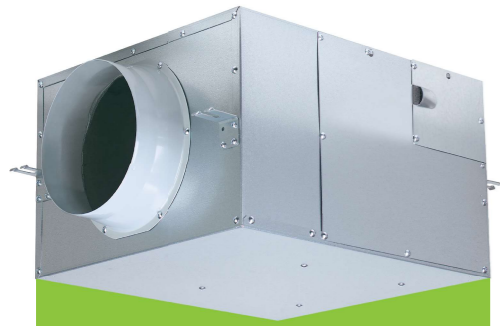


Specification

Model No.	Phase	Rating Voltage [V/Hz]	Consumption [W]	R.P.M. [min ⁻¹]	Air Volume		Noise [dB(A)]	Weight [kg]	Duct Size [mm]	Impeller Diameter [mm]		
					[CMH]	[CFM]						
FV-18NS3	1	220	60	1,250	50	Hi	500	294	29	8.5	ø150	158
					Lo	405	238	27				
			60	Hi	490	288	30					
				Lo	385	227	26					
FV-18NF3	1	220	91	1,190	50	Hi	770	453	31	10	ø200	158
					Lo	620	365	29				
			60	Hi	760	447	32					
				Lo	580	341	28					

Note: The value in Specification tables are representative characteristic value at 220V, 50/60Hz.

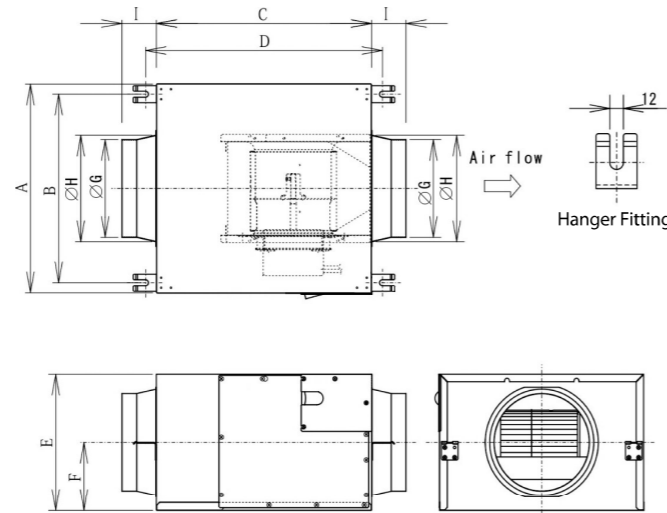
FV-20NS3 / FV-23NL3



- Long life condenser motor with thermal cut-off
- Twin flow fan (sirocco fan)
- Fan casing with tapered scroll
- Embedded terminal box
- Noise absorption material adopted
- Compact size

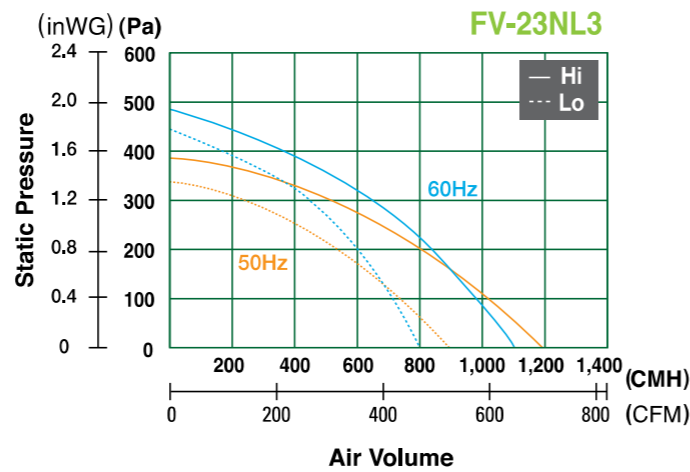
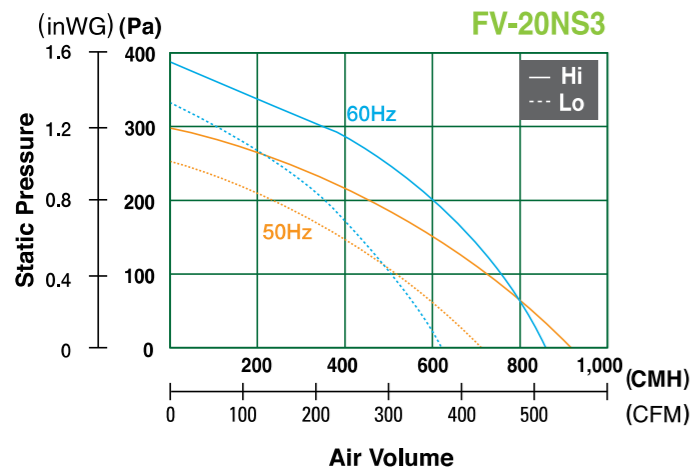
Dimension

Unit : mm



Model	A	B	C	D	E	F	G	H	I
FV-20NS3	416	376	441	485	272	136	195	211	70
FV-23NL3	468	424	469	513	298	149	195	211	70

Performance Data (220V 50/60Hz)

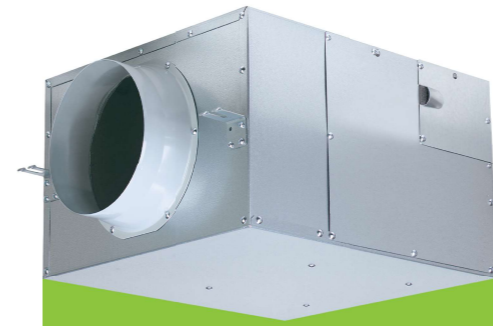


Specification

Model No.	Phase	Rating Voltage [V/Hz]	Consumption [W]	R.P.M. [min ⁻¹]	Air Volume		Noise [dB(A)]	Weight [kg]	Duct Size [mm]	Impeller Diameter [mm]		
					[CMH]	[CFM]						
FV-20NS3	1	220	120	1,195	50	Hi	920	541	32	14	ø200	178
						Lo	720	424	29			
					60	Hi	860	506	32			
						Lo	620	365	26			
FV-23NL3	1	220	230	1,245	50	Hi	1,200	706	40	18	ø200	220
						Lo	900	530	34			
					60	Hi	1,100	647	40			
						Lo	800	471	32			

Note: The value in Specification tables are representative characteristic value at 220V, 50/60Hz.

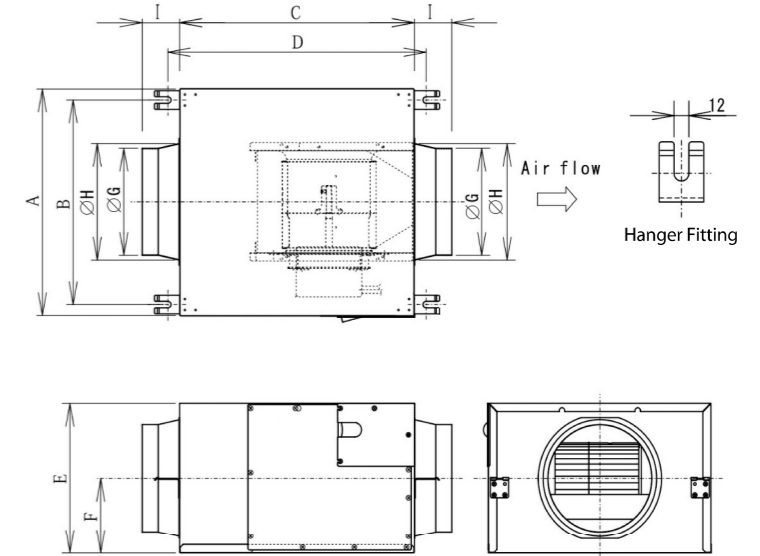
FV-25NS3 / FV-25NF3



- Long life condenser motor with thermal cut-off
- Twin flow fan (sirocco fan)
- Fan casing with tapered scroll
- Embedded terminal box
- Noise absorption material adopted
- Compact size

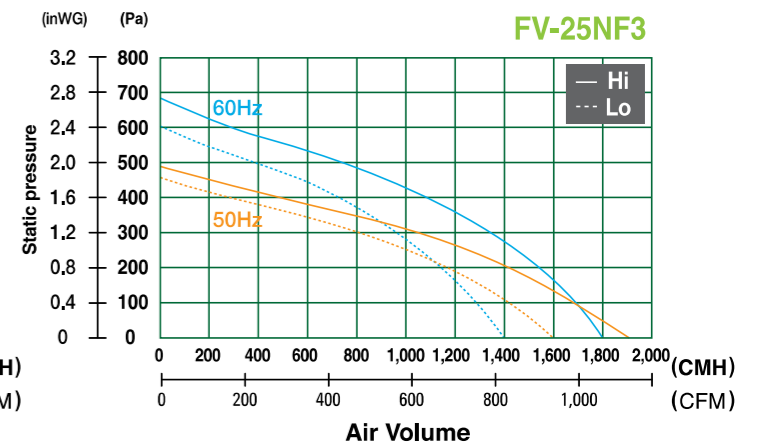
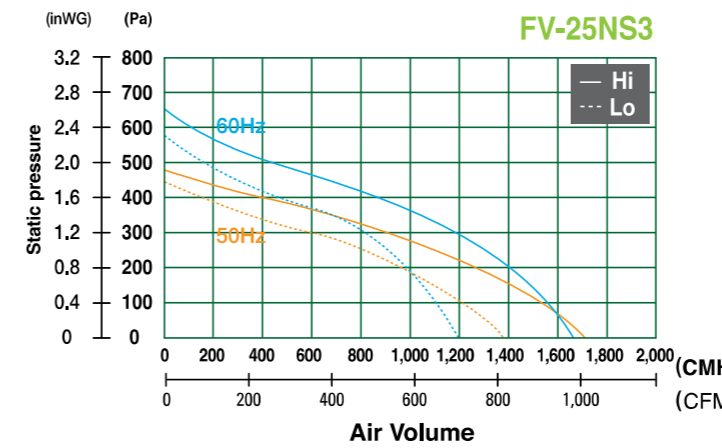
Dimension

Unit : mm



Model	A	B	C	D	E	F	G	H	I
FV-25NS3	494	450	505	549	334	167	240	255	85
FV-25NF3	494	450	505	549	334	167	240	255	85

Performance Data (220V 50/60Hz)



Specification

Model No.	Phase	Rating Voltage [V/Hz]	Consumption [W]	R.P.M. [min ⁻¹]	Air Volume		Noise [dB(A)]	Weight [kg]	Duct Size [mm]	Impeller Diameter [mm]			
					[CMH]	[CFM]							
FV-25NS3	1	220	345	1,125	50	Hi	1,700	1,000	41	24	ø250	220	
						Lo	950	1,380	812				38
					60	Hi	1,100	1,650	971				41
						Lo	890	1,200	706				39
FV-25NF3	1	220	390	1,225	50	Hi	1,900	1,118	43	24	ø250	220	
						Lo	1,070	1,600	942				40
					60	Hi	1,245	1,810	1,065				42
						Lo	1,000	1,400	824				41

Note: The value in Specification tables are representative characteristic value at 220V, 50/60Hz.

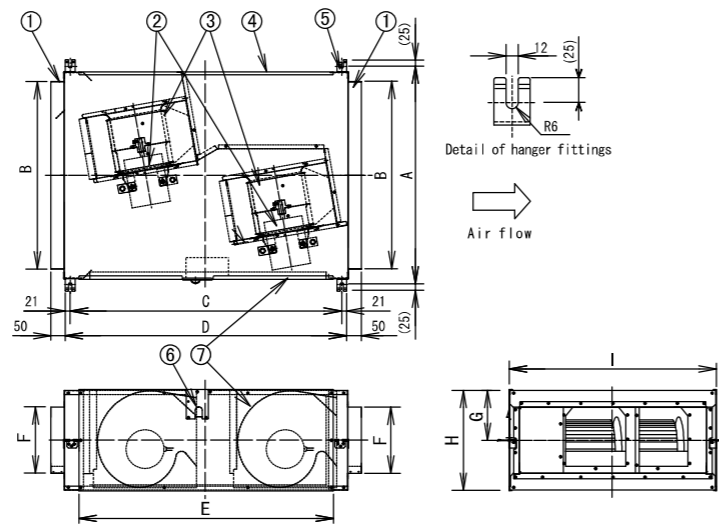
FV-25SW3 / FV-25SM3



- Long life condenser motor with thermal cut-off
- Fan casing with tapered scroll
- Embedded terminal box
- Noise absorption material adopted
- Compact size

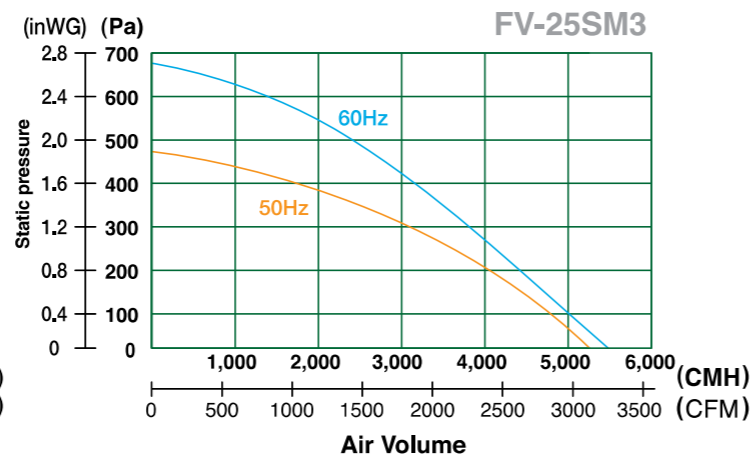
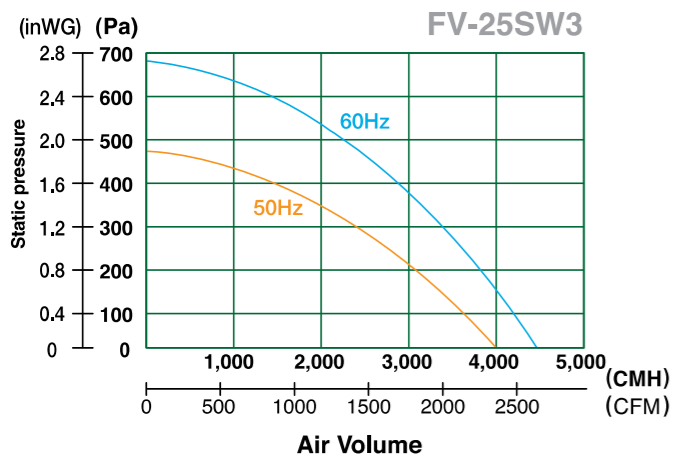
Dimension

Unit : mm



Model	A	B	C	D	E	F	G	H	I
FV-25SW3	809	496	1,010	1,052	942	246	185	370	766
FV-25SM3	809	696	1,010	1,052	942	246	185	370	766

Performance Data (380V 50/60Hz)



Specification

Model No.	Phase	Rating Voltage [V/Hz]	Consumption [W]	R.P.M. [min ⁻¹]	Air Volume		Noise [dB(A)]	Weight [kg]	Duct Size [mm]	Impeller Diameter [mm]	
					[CMH]	[CFM]					
FV-25SW3	3	380	50	940	1,375	4,000	2,354	43	60	250 x 500	250
			60	1,450	1,530	4,500	2,648	45			
FV-25SM3	3	380	50	1,180	1,345	5,200	3,060	45	60	200 x 700	250
			60	1,750	1,470	5,500	3,237	46			

Note: The value in Specification tables are representative characteristic value at 380V, 50/60Hz.

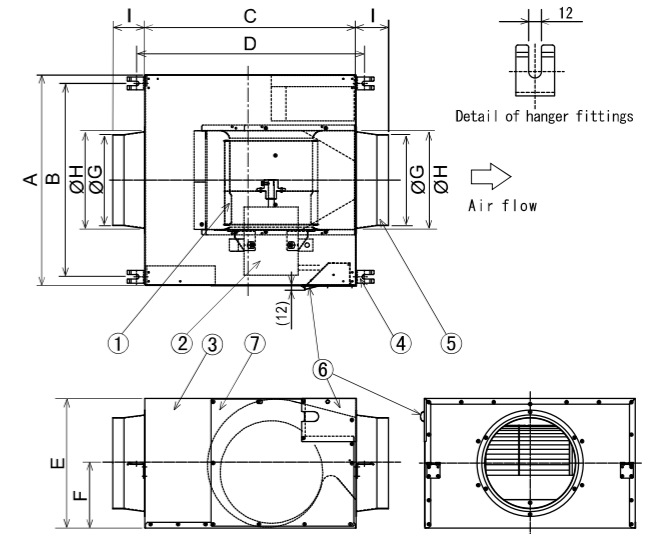
FV-28NX3



- Long life condenser motor with thermal cut-off
- Fan casing with tapered scroll
- Embedded terminal box
- Noise absorption material adopted
- Compact size

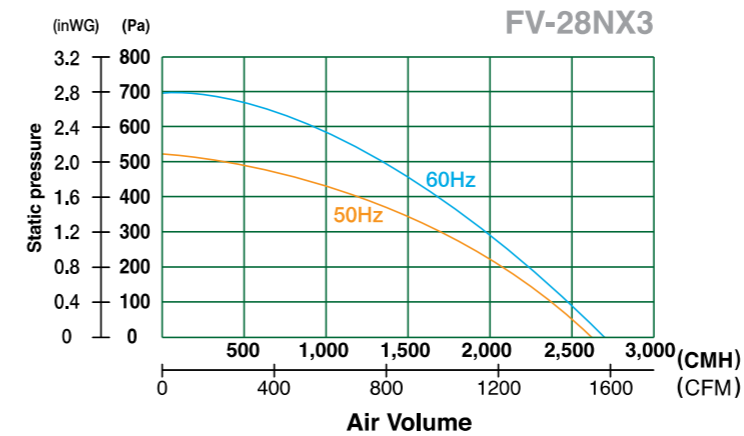
Dimension

Unit : mm



Model	A	B	C	D	E	F	G	H	I
FV-28NX3	554	510	557	601	342	171	240	255	85

Performance Data (380V 50/60Hz)



Specification

Model No.	Phase	Rating Voltage [V/Hz]	Consumption [W]	R.P.M. [min ⁻¹]	Air Volume		Noise [dB(A)]	Weight [kg]	Duct Size [mm]	Impeller Diameter [mm]	
					[CMH]	[CFM]					
FV-28NX3	3	380	50	600	1,295	2,600	1,530	44	28	ø250	280
			60	840	1,380	2,650	1,560	45			

Note: The value in Specification tables are representative characteristic value at 380V, 50/60Hz.